

AD Squarewave M730

Frequency Band

UHF 860 – 960Mhz

Chip

Impinj M730

Antenna Dimensions

93 X 11 mm

International Standard

ISO/IEC 18000 – 63, EPC Gen2 V2

Industry Segments

Industry
Logistics
Automotive

Applications

Home Essentials
Supply Chain Management
Inventory & Logistics

RoHs

EU Directive 2011/65/EC and
Directive (EU) 2015/863

REACH

Regulation (EC) No. 1907/2006



High performance condensed to the max

AD Squarewave M730 inlays and tags are designed for global retail, industrial and supply-chain applications, offering excellent performance not only on low detuning materials such as cardboard and plastic, but also on materials with high dielectric effect. With relatively narrow width, this product has a flat global performance over whole UHF band on variety of materials.

AD Squarewave M730 inlays and tags are a size-optimized 97 mm / 4 inch form factor, making them suitable for use with a wide range of supply chain labels, and are available in dry, wet and label delivery formats.

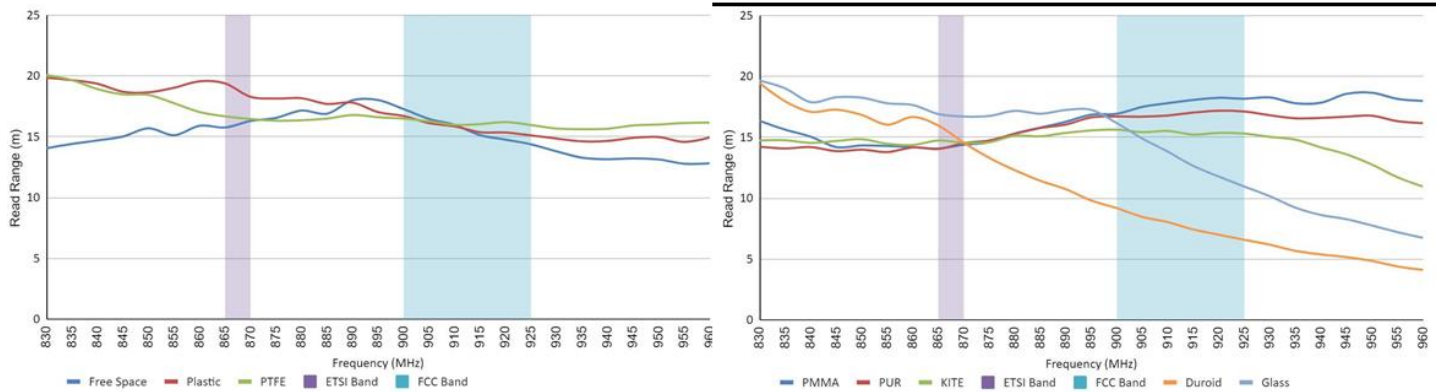
The AD Squarewave M730 features Impinj's M730, offering high performance across different materials and challenging environments due to enhanced adaptive RF tuning features. The Impinj M730 IC has 128-bit EPC memory, and compatible with the global GS1 UHF Gen2v2 standard which ISO/IEC standardized as 18000-63.



TECHNICAL FEATURES

Chip	Impinj M730			
EPC and User Memory	128-bit and 0-bit			
TID Memory	96-bit / 48-bit unique serial number			
Product Code	3007901	3007902	3007903	3007906
Delivery Format	Dry inlay	Wet inlay	Label	Label
Die-Cut Dimension	-	97 x 15 mm / 3.8 x 0.6 in	97 x 15 mm / 3.8 x 0.6 in	97 x 15 mm / 3.8 x 0.6 in
Inlay Substrate	PET	PET	PET	PET
Face Sheet	-	-	Mid-gloss paper	Opaque matt paper
Inlay Liner Material	Siliconized paper	Siliconized paper	Siliconized paper	Siliconized paper
Standard Pitch	20 mm / 0.787 in	20 mm / 0.787 in	20 mm / 0.787 in	20 mm / 0.787 in
Web Width	97 mm / 3.8 in	100 mm / 4 in	100 mm / 4 in	100 mm / 4 in
Core Size	76 mm / 3 in	76 mm / 3 in	76 mm / 3 in	76 mm / 3 in
Quantity / Reel	20,000 pcs/reel 20,000 pcs/box	20,000 pcs/reel 20,000 pcs/box	5,000 pcs/reel 10,000 pcs/box	5,000 pcs/reel 10,000 pcs/box
Operating Temperature	-40 °C to 85 °C / -40 °F to 185 °F			

READ RANGE FOR CLASS1 & 2 MATERIALS



All graphs are indicative: performance in real life applications may vary.

